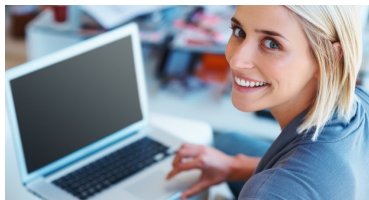


None Discrimination Policy

In accordance with title VI of the Civil Right Act of 1964 and its implementing regulation, BMHHC will not, directly or through the contractual arrangements discriminate on the basis of race, color, or origin in its admissions or its provision of services and benefits, including assignments for transfers or referrals to or from BMHHC. Staff privileges (if appropriate) are granted without regard to race, color or national origin.

In accordance with Section 504 of the Rehabilitation Act of 1973 and its implementing regulation, BMHHC will not directly or through contractual arrangements, discriminate on the basis of disability in admissions, access, treatment or employment. BMHHC's supervisor of nursing will serve as the Section 504 Coordinator.

In accordance with the Age Discrimination Act of 1975 and its implementation regulation, BMHHC will not directly or through the contractual arrangements, discriminate on the basis of age in the provision of services, unless age is a factor necessary to normal operations or the achievement of any statutory objectives.



(800)932-6615
www.bmhhc.com

Mission Statement

Blue Mountain Home Health Care, Inc. (BMHHC) was founded to provide comprehensive health care services of exceptional quality to all patients equally, regardless of their ability to pay. We are driven by the philosophy of providing excellence in the home health services to our community with genuine compassion and kindness.

Our Goals

At Blue Mountain Home Health Care, Inc. Quality home health care is important to us. We believe in doing the right thing every time, not just when it's convenient. Our goal is to meet the needs of our patients while maintaining our commitment to providing affordable and consistently high quality services for all of our patients.

A Nurse is always available
Call 24 hours a day, 7 days a week
Toll Free: (800) 932-6615

Pottsville Location:

1851 W End Ave, Suite A, Pottsville, PA 17901
Phone: (570) 622-4444 Fax:(570) 622-4465

Harrisburg Location:

5405 Jonestown Road, Suite 103,
Harrisburg, PA 17112
Phone: (717) 839-5020 Fax:(717) 839-5030

Toll Free: (800) 932-6615

Quality of Your Health care is
important to us



BLUE MOUNTAIN
Home Health Care, Inc.



Quality of your Home Health
Care Is Important to Us



It's the Best Choice..

(800)932-6615
www.bmhhc.com



Home Health Care We Provide:

Blue Mountain Home Health Care, Inc. is licensed by the state of Pennsylvania, Department of Health, Certified by Medicare and Medicaid, and Accredited by the Joint Commission.

Our focus is high quality patient care and safety. In order to be admitted to our agency under Medicare Part A benefits, the following admission criteria must be met:

- Patient must be home bound
- Patient must be under the care of a physician.
- Services are reasonably necessary and intermittently required.

The definition of home bound is a condition which restricts a patient's ability to leave his/her residence without the aid of supportive devices, the use of special transportation, or personal assistance.



(800)932-6615
www.bmhhc.com

Our Home Care Team includes:

- **Skilled Nursing**
- **Psychiatric Nursing**
- **Physical Therapy**
- **Occupational Therapy**
- **Speech Therapy**
- **Medical Social Services**
- **Home Health Aide Services**

Types of Services

We provide care for both adults and children. Our professional staff will help you rehabilitate with the following types of services:

Skilled nursing:

- Skilled assessment and observation
- Medication management & education
- Pain management
- Wound care
- Depression & anxiety treatment

Physical therapy:

- Therapeutic exercises manually and with adaptive equipment. The use of modalities, such as ultrasound, to restore and improve physical functioning following illness, or after injury or surgery.
- Gait training

Occupational therapy:

- Daily living activities training to improve independence with bathing, meal preparation, and dressing.
- Neurodevelopment sensory treatment

Medical social services:

- Assessment of social, emotional, and financial resources needed to enhance overall patient care.
- Counseling to help find ways to deal with the changing health care needs.

Home health aide services:

- Assisting with personal care and daily activities such as bathing, grooming, and help with routine exercises.

Billing

Medicare, Medicaid, and most private insurances and HMOs provide coverage for home care services that varies with each plan and may cover all or part of services.

Our staff works closely with you to determine eligibility for payment and can help arrange an alternate source of payment if necessary.

Toll Free: (800) 932-6615

▶ Pottsville Location:

1851 W End Ave, Suite A, PA 17901
Phone: (570) 622-4444
Fax: (570) 622-4465

Harrisburg Location:

5405 Jonestown Road, Suite 103
Harrisburg, PA 17112
Phone: (717) 839-5020
Fax: (717) 839-5030